



# Anaplan Oil & Gas Advanced Analytics

# Anaplan's integrated forecasting allows for streamlined price and operational risk modeling for oil & gas organizations



## Automated Approach

Automated driver-based modeling through Monte Carlo simulations



## Integrated platform

Simulations are fully integrated into the Anaplan platform and leverage the Anaplan API



## Advanced Analytics

Simulations allow for oil & gas clients to conduct cash flow at risk modeling and scenario-based forecasting

## 1 Price Forecasting

Prices are forecasted using historical distributions and correlated random variables

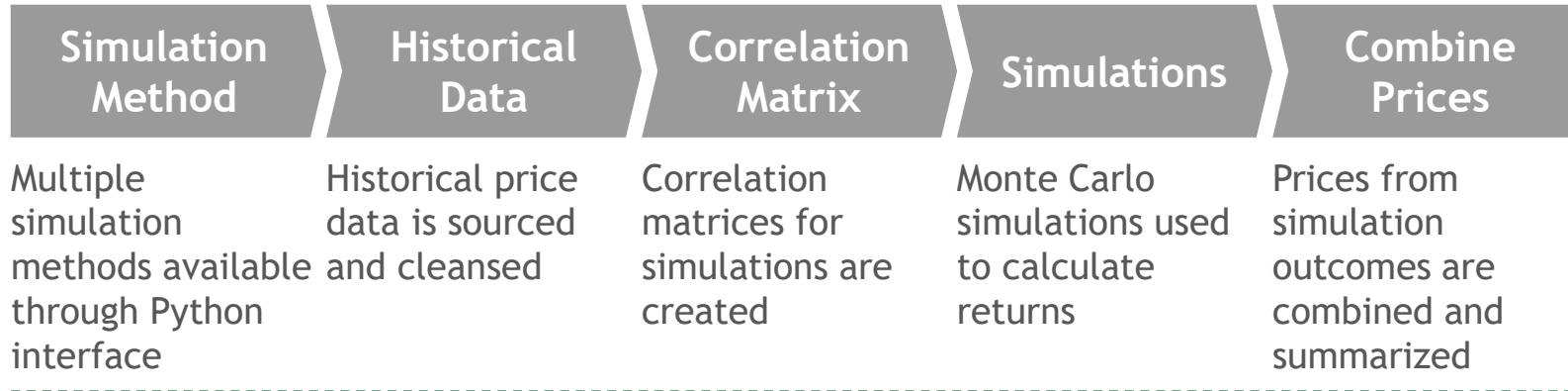
---

## 2 Operational Risk

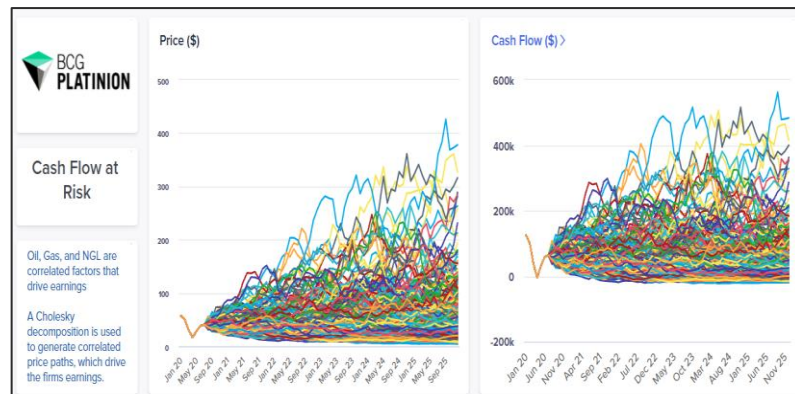
Simulation based models are used to estimate:

- Operational disruptions
- Estimated time to operationalize following disruptions
- Dollar loss value due to disruption

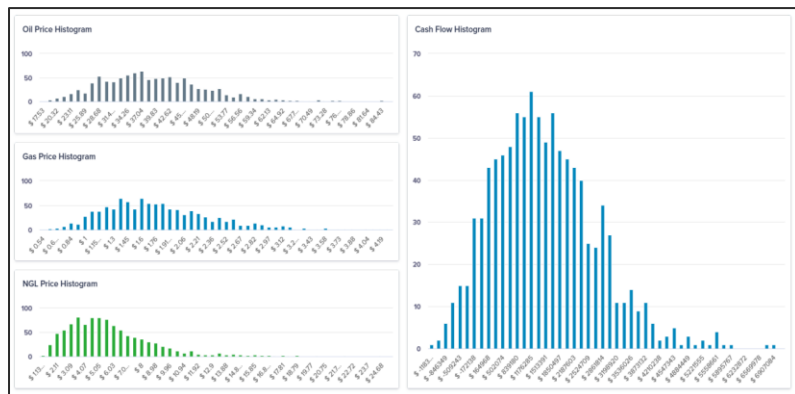
# Monte Carlo simulations embedded into Anaplan produce price forecasts and help automate scenario analysis



Price and cash flow simulation automates scenario analysis



Simulation distribution analysis provides insights into cash flow at risk profile



- Key Benefits
- Seamless integration of Python models
  - Facilitates data inspection and review
  - Key report generation is flexible with simplistic UI
  - Delivers a variety of reporting views and model drill-down based on model output (e.g., company, segment, simulation-based views)

# Anaplan facilitates operational risk loss modeling through the capture of disruption and expected losses

## Operational Risk Modeling Methodologies

### Disruption Timing

Disruptions are simulated based on historical distributions. This approach adapts based on number of assets, and timespan.

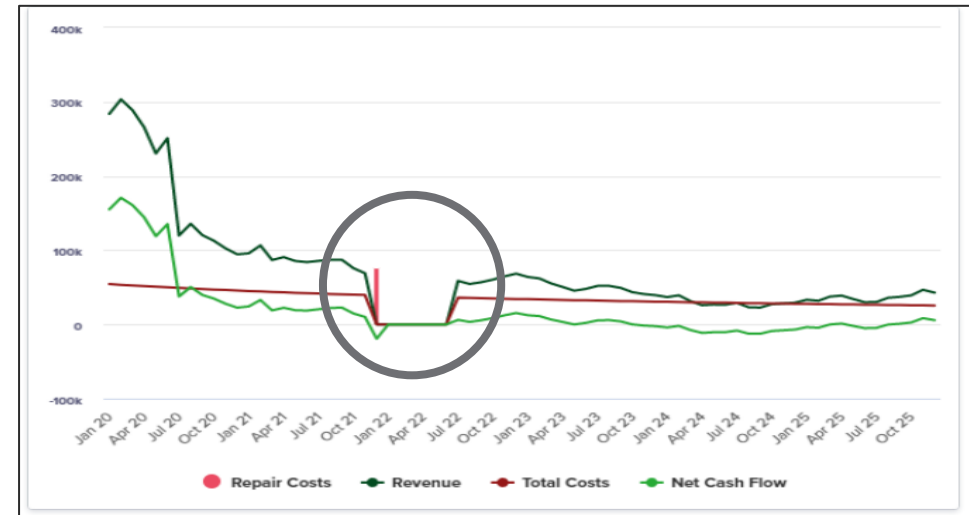
### Recovery Time

For each simulated disruption, the number of periods that the asset is offline is also simulated.

### Loss Forecasting

Simulated dollar losses associated with disruptions are used to estimate total losses.

Disruption timing, recovery time and associated revenue and cash flow impact readily available in the dashboards. Impact can be displayed at the company level, segment level or by simulation #



	FY20	FY21	FY22	FY23	FY24	FY25
Type Curve Final						
Revenue	2,308,243	953,874	363,601	601,943	346,420	437,525
Total Costs	597,092	463,814	211,256	387,383	349,401	319,195
Repair Costs	0	77,120	0	0	0	0
Net Cash Flow	1,435,865	224,763	67,875	62,983	-133,255	-1,124



[bcg.com](http://bcg.com)