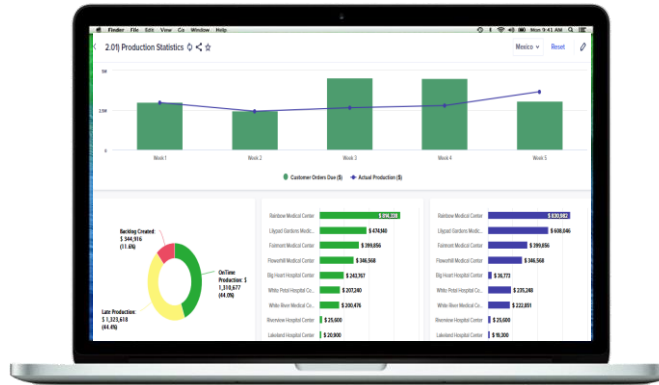


Production Scheduling

The Production Scheduling solution is a one stop destination that allows organizations to track, retrieve and modify information pertaining to entities impacting their overall plant production so to say production schedules, capacity, priorities, purchase orders, etc. and finally optimize their production schedules based off this information.

Now, you can establish planning and scheduling horizons, from daily to long-term, that match the pace of your business.



Key features of the Anaplan platform

Planning at scale

Enterprise-grade scale with a cloud native platform and patented in-memory Hyperblock™ engine

Voice to your data

One location for all your planning data that is trusted, connected, and current

Power decision making

Unmatched flexibility to model any scenario for the organization and by the organization

There's a better way to plan

Leverage the combined power of technology and people to optimize your production schedules at the line and plant level, as well as region level. Connected Planning ensures that your strongest people use the best available data to make better-informed decisions.

It's Dynamic – Plan and allocate resources rapidly as situations evolve

It's Collaborative – Involve all the right people in decisions

It's Intelligent – Leverage internal and external data to unlock predictive insights

Key benefits

- Provide your Production Planners and Managers with flexibility and complete control to modify levers impacting production.
- Optimization cycles run daily and are based on Linear Programming which considers the organizations' requirements and constraints to come up with an optimal production schedule.
- Customize how you view reports, personalize views based on roles and responsibilities and export them into a format that works for your team.

Key features

Forward schedule

- Allow production to be forward scheduled days ahead at plant level

Force allocate resources

- Identify high priority production orders and force allocate based on certain levers like part availability, order due date, etc.

Prioritize

Assign customers, orders and due dates priority weighting based on company decisions, profits, customer relationships.

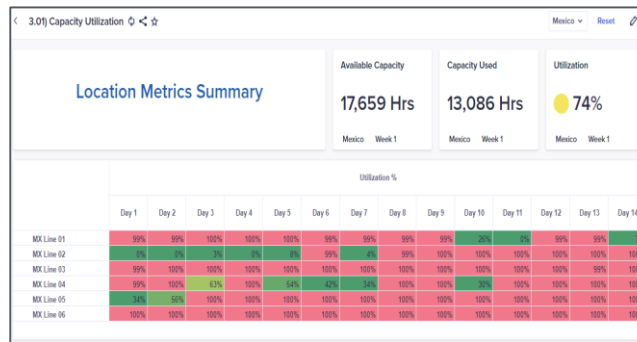
Modeling, analysis, and optimization

- Run optimization cycles to generate optimal production schedules daily based on demand, parts availability, profits and priorities, and instantly view the effects.
- Measure the impact of potential changes before rolling out.

Smart reporting

- View production statistics like dollarized backlog at a plant, production line, product and customer level.
- Track production performance metrics like line capacity, utilization and make changes to capacity, # of working shifts etc.

Production Order Priority & Forced Allocation						
Customer Priority	Default Priority	Manufacturing Location	Customer	SKU	Due Date	
	1098366	Normal	Malaysia	Fairmont Medical Center	Robust AM-550 and AM-BAS50 Tables	9/28/20
	1098368	Normal	Malaysia	Pine Valley Hospital Center	Robust Ear Wash System Plus	9/30/20
	1098370	Normal	Malaysia	Grace Medical Center	Robust Compact Straight Training Stairs	10/2/20
	1098371	Normal	Malaysia	Grace Medical Center	Robust AM-SF300 Table	9/18/20
Oak Crest Medical Center	Prior	1098372	Normal	Malaysia	FlowerHill Medical Center	Lightweight L55
Big River Medical Center	Prior	1098375	Normal	Malaysia	Crossroads Medical Center	Robust Narrow MRI Cart, Key Lock
Crossroads Medical Center	Prior	1098377	Normal	Malaysia	East Valley Medical Center	Transport TW207
Archangel Medical Center	Prior	1098383	Normal	Malaysia	Fairmont Medical Center	Robust Convertible Staircase
White Wing Medical Center	Prior	1098386	Normal	Malaysia	Phoenix Medical Center	Robust Ramp and Curb Training Set
Fairmont Medical Center	Prior	1098387	Normal	Malaysia	Springfield Medical Center	Robust Narrow MRI Cart, Key Lock
Silver Gardens Medical Center	Prior	1098388	Normal	Malaysia	Heartstone Hospital Center	Robust AM-300 and AM-BA300 Tables
Heartland Medical Center	Prior	1098389	Normal	Malaysia	Grand Meadow Hospital Center	Robust AM-500 and AM-BAS50 Tables
Hyacinth Medical Center	Prior	1098390	Normal	Malaysia	Oak Crest Medical Center	3.5V EpiScope Skin Surface Microscope



Key features of the Anaplan platform

Ease of use

Engaging, collaborative, and actionable user experience

Safeguarding your present and future

Robust protection through user access controls, identity management, and data encryption

Superior visibility

Embedded intelligence and optimization to drive insights that matter

About Anaplan

Anaplan (NYSE: PLAN) is pioneering the category of Connected Planning. Our platform, powered by our proprietary Hyperblock™ technology, purpose-built for Connected Planning, enables dynamic, collaborative, and intelligent planning. Large global enterprises use our solution to connect people, data, and plans to enable real-time planning and decision-making in rapidly changing business environments to give our customers a competitive advantage. Based in San Francisco, we have over 20 offices globally, 175 partners, and more than 1,400 customers worldwide.

To learn more, visit anaplan.com.

