

# Procurement CAPEX Planning

CAPEX Planning has diverse aspects and to create well-established plans it is necessary to combine data from many different sources and provide access to lots of concurrent users. This can be a resource intensive task, which can not be fulfilled anymore with spreadsheets.

This model provides a better way to manage your CAPEX Portfolio in an automated, integrated and structured manner, with one source of truth and location in terms of data and reporting while enabling strategic decision making.

Leveraging Anaplan's Connected Planning environment enables your company to centrally manage all your projects from budget planning, through procurement, tracking of actuals, until forecast.

## There's a better way to plan

Leverage the combined power of technology and people to manage your CAPEX portfolio by providing a centralized view of projects spend in one connected, cloud based platform. Use the Capex Planning application in Anaplan to increase the forecast accuracy, lower the workload for planners and increase time for high level decision-making processes.

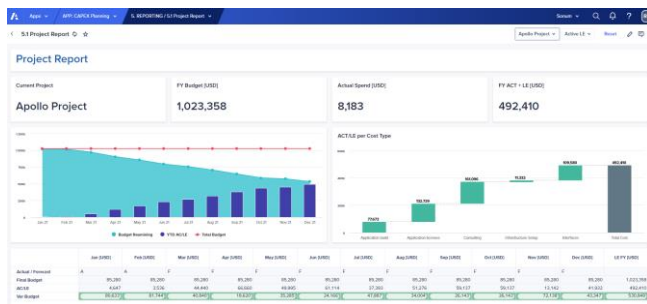
**It's Dynamic** – Plan and allocate resources rapidly as situations evolve

**It's Collaborative** – Involve all the right people in decisions – even your customers

**It's Intelligent** – Leverage internal and external data to unlock predictive insights

## Key benefits

- Import data from multiple sources (Actuals and Commitment on the lowest level, Vendor information, etc.) to create a unified CAPEX Plan across the company.
- Gives the possibility to create detailed Budget with the participation of multiple concurrent users. After input is ready the results can be analysed. Leaders can get immediate picture about the feasibility, utility of the planned projects.
- Compare budget vs. actuals vs. forecasts, estimate calendarized spend, and provide new projections on detailed level.



## CUSTOMER STORY Fast-Moving Consumer Good (FMCG)

This large FMCG company needed a solution which enables them to plan and track the full lifecycle of 1,500 projects in 80 countries together with their savings. Anaplan connected with the company's systems provides them granular visibility into the end to end CAPEX process.

## CHALLENGES

Many disconnected spreadsheets without proper security

Disconnected processes throughout the business, constant manual updates

No insights into the spend and analysis

Handle many concurrent Users

Time consuming efforts to combine the data from different sources

## RESULTS

Improved visibility into the full process

Manual work significantly reduced

Faster, more accurate calculations

Better insights and more time available for analysis

**“We have definitely seen an improvement in our ability to forecast our portfolio”**

Value Creation Specialist



Sonum focuses on all aspects of Connected Planning for Finance, Sales, Supply Chain, Workforce plus Sourcing & Procurement. With over 20 years of industry experience, and as the first Anaplan implementation partner in Europe, we're committed to our Customer's success. With our pragmatic company culture and eagerness to over-perform, we make it easy for our clients to start with Anaplan and grow quickly into a comprehensive connected planning strategy.



